

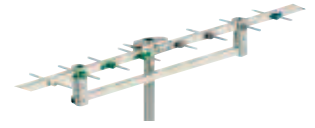
Aerials

Aerial accessories

Auxiliary booms

CA1 and CA2 are designed to be used with different aerials.

Auxiliary boom increases the mechanical strength of these aerials.



▶ CA1

Item	Code	Wind load at 120Km/h Kg	Packaging	
			Pcs	Kg
CA1	219600	0.8	20	6.2
CA2	219602	0.8	20	6.2

Check the technical data of each antenna for the required auxiliary boom.

Aerial accessories

Mast

Wide range of steel masts, hot dip galvanized welded to ensure the highest quality and durability.



▶ PaloSB - PaloCB - TEL..



▶ Pal curva..40

Item	Code	Description	Packaging Pcs
Telescopic masts with cap			
TEL1,5/4	287243	mt 2+2=4, Ø 25+30 mm, sp. 1,5 mm, 2 nuts M8	5
TEL2/4	287241	mt 2+2=4, Ø 28+35 mm, sp. 2 mm, 4 nuts M8	3
TEL2/6	287242	mt 2x3=6, Ø 28+35+42 mm, sp. 2 mm, 4 nuts M8	2
Masts without nuts with cap			
PaloSB2 1,5/25	287244	mt 2, Ø 25x1,5mm	10
PaloSB2 2/28	287245	mt 2, Ø 28x2mm	5
PaloSB3 2/28	287246	mt 3, Ø 28x2mm	5
Masts with nuts and cap			
PaloCB2 1,5/30	284247	mt 2 Ø 30x1,5 mm, 2 nuts M8	5
PaloCB2 1,5/35	287248	mt 2 Ø 35x1,5 mm, 2 nuts M8	5
PaloCB2 1,5/40	287249	mt 2 Ø 40x1,5 mm, 2 nuts M8	5
PaloCB2 2/35	287250	mt 2 Ø 35x2 mm, 4 nuts M8	5
PaloCB2 2/42	287251	mt 2 Ø 42x2 mm, 4 nuts M8	5
PaloCB2 2/50	287252	mt 2 Ø 50x2 mm, 4 nuts M8	3
PaloCB2 3/60	287256	mt 2 Ø 60x3 mm, 4 nuts M8	2
PaloCB3 2/35	287253	mt 3 Ø 35x2 mm, 4 nuts M8	5
PaloCB3 2/42	287254	mt 3 Ø 42x2 mm, 4 nuts M8	3
PaloCB3 2/50	287255	mt 3 Ø 50x2 mm, 4 nuts M8	2
PaloCB3 3/60	287257	mt 3 Ø 60x3 mm, 4 nuts M8	1
Elbow shaped masts			
Pal curva40+att	287258	Elbow shaped mast 2 mt, fixing clips 5 cm distance. Diam. Ø 40x2mm. Elbow dismountable 180° Ø 48x2 mm	1
Pal curva50+att	287259	Elbow shaped mast 2 mt, fixing clips 5 cm distance. Diam. Ø 50x2mm. Elbow dismountable 180° from Ø 60x2 to Ø 50x2 mm	1

Aerial accessories

Mast brackets



▶ **ZN RING**



▶ **ZN ESP...**



▶ **ZN 3P REG**



▶ **ZN PM...**



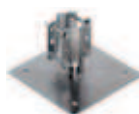
▶ **ZN RINF**



▶ **ZN ECONO 10**



▶ **CAV 8 UNIVERSAL**



▶ **ZN SOLAI**



▶ **ZN FR...**



▶ **NASTRO ZN FR**



▶ **ZN CAMINO**



▶ **ZN MURO**

Item	Code	Description	Packaging Pcs
ZN RING	287271	Mast bracket for railing, with nuts, Ø 30÷50 mm. Electrolytic zinc coating.	70
ZN ESP TU10	287260	Adjustable mast bracket, tube 10 cm, Ø 25÷50 mm. Electrolytic zinc coating.	50
ZN ESP TU15	287261	Adjustable mast bracket, tube 15 cm, Ø 25÷50 mm. Electrolytic zinc coating.	50
ZN ESP TU20	287262	Adjustable mast bracket, tube 20 cm, Ø 25÷50 mm. Electrolytic zinc coating.	50
ZN ESP TO10	287268	Adjustable mast bracket, reinforcing rod 10 cm. Electrolytic zinc coating.	50
ZN ESP TO15	287269	Adjustable mast bracket, reinforcing rod 15 cm. Electrolytic zinc coating.	50
ZN ESP TO20	287270	Adjustable mast bracket, reinforcing rod 20 cm. Electrolytic zinc coating.	30
ZN 3P REG	287272	Tripod mast mount, adjustable 26÷46. Hot-dipped zinc coating.	12
ZN PM EMILIA	287273	"Emilia" bracket for Ø 40÷90 mm. Hot-dipped zinc coating.	12
ZN PM ECONO	287274	Cheap bracket for Ø 25÷60 mm. Hot-dipped zinc coating.	40
ZN PM RINF	287275	Reinforced bracket for Ø 30÷60 mm. Hot-dipped zinc coating.	15
ZN RINF5	287276	Reinforced bracket, 5 cm dist. for Ø 30÷60 mm. Hot-dipped zinc coating.	12
ZN RINF10	287277	Reinforced bracket, 10 cm dist. for Ø 30÷60 mm. Hot-dipped zinc coating.	12
ZN RINF20	287278	Reinforced bracket, 20 cm dist. for Ø 30÷60 mm. Hot-dipped zinc coating.	10
ZN ECONO10	287279	Cheap bracket dist. 10, for Ø 30÷60 mm. Hot-dipped zinc coating.	25
CAV 8 DIST	287280	"8" clevis with distance 60mm, for Ø 30÷60 mm. Hot-dipped zinc coating.	15
CAV 8 UNIVERSAL	287281	Universal "8" clevis for Ø 30÷60 mm. Electrolytic zinc coating.	25
CAV 8	287282	"8" clevis for Ø 25mm. Electrolytic zinc coating.	60
ZN SOLAI	287283	Plate for Ø 30÷50 mm. Hot-dipped zinc coating.	20
ZN FR CAMnew28	287285	Chimney mount, 28 cm, Ø 25÷50mm. Hot-dipped zinc coating.	20
ZN FR CAMnew32	287286	Chimney mount, 32 cm, Ø 25÷50mm. Hot-dipped zinc coating.	20
ZN FR CAM32	287284	Chimney mount, 32 cm, Ø 25÷50mm. Hot-dipped zinc coating.	12
NASTRO ZN FR	287263	Zinc belt for french brackets 40x0,5mm,25mt. Electrolytic zinc coating.	1
ZN CAMINO	287287	Chimney mount, dist. 14 cm, Ø 25÷45mm. Electrolytic zinc coating.	30
ZN MURO	287288	Reinforced wall mount 30cm. Electrolytic zinc coating.	25

Aerials - SAT dishes

Aerial accessories

Mechanical accessories



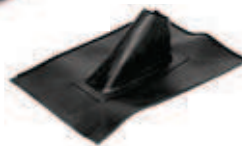
▶ RALLA TRIS



▶ CONTROPIASTRA



▶ TEGOLA...



▶ CAPPUCCIO PVC

Item	Code	Description	Packaging Pcs
RALLA TRIS	287289	Belt 20x3, for Ø 25÷45 mm. Electrolytic zinc coating.	100
TENDIFILO	287290	Tension disks M90, for wire Ø 5mm max. Electrolytic zinc coating.	100
CONTROPIASTRA	287291	Guard plate for ZN PM EMILIA. Hot-dipped zinc coating.	1
TEGOLA PVC	287292	PVC tile for max Ø 60mm	30
TEGOLA PIOMBO	287293	Lead tile for max Ø 60mm	5
CAPPUCCIO PVC	287294	PVC cap for Ø 40÷80 mm	1

Aerial accessories

Mechanical accessories for satellite dishes



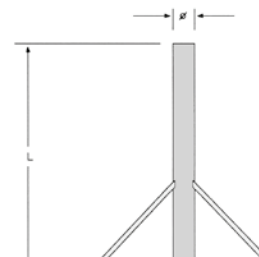
▶ SUP UNIVERSAL



▶ SUP MURO..



▶ SUP CURVO



▶ BA914

Item	Code	Description	Packaging Pcs
SUP UNIVERSAL	287264	Universal dish bracket Ø 40x1,4mm. Hot-dipped zinc coating.	15
SUP MURO26	287265	Wall bracket dist. 26 cm Ø 40x1,4mm. Hot-dipped zinc coating.	20
SUP MURO46	287266	Wall bracket dist. 46 cm Ø 40x1,4mm. Hot-dipped zinc coating.	10
SUP CURVO180G	287267	Elbow shaped bracket Ø 30x60mm. Tube Ø 40x1,4mm. Hot-dipped zinc coating.	8

Item	Code	Description	Fig.	Ø mm	L cm	H cm	Mast bracket mm	Packaging Pcs	Weight Kg
BA914	280674	Base for dish mount	1e	76	100	-	-	1	13

* Use STF kit for mast installation.